



POINT EAST
MARITIME VILLAGE

Sheepscot

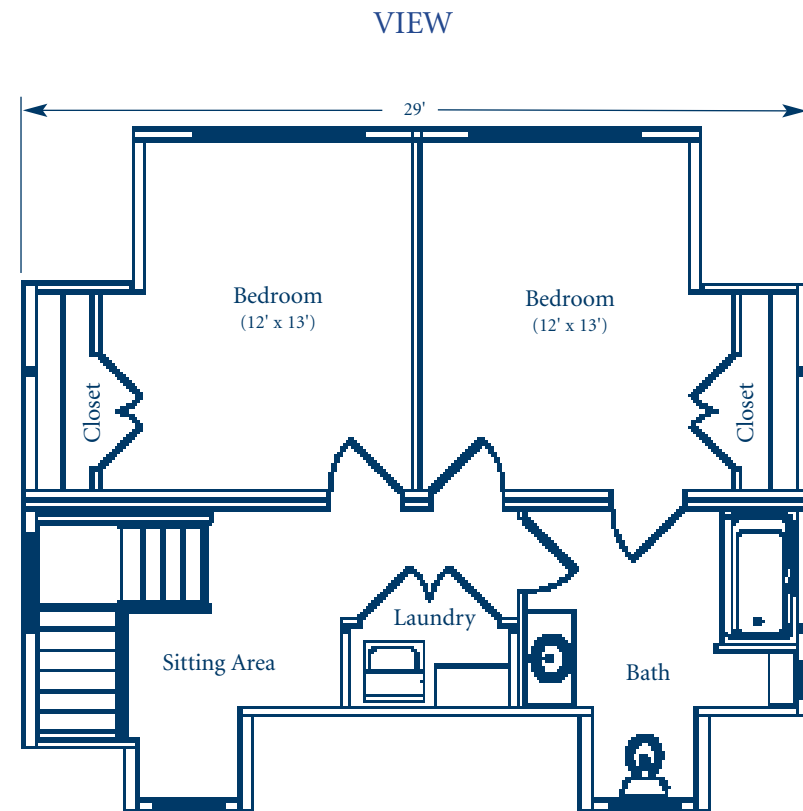
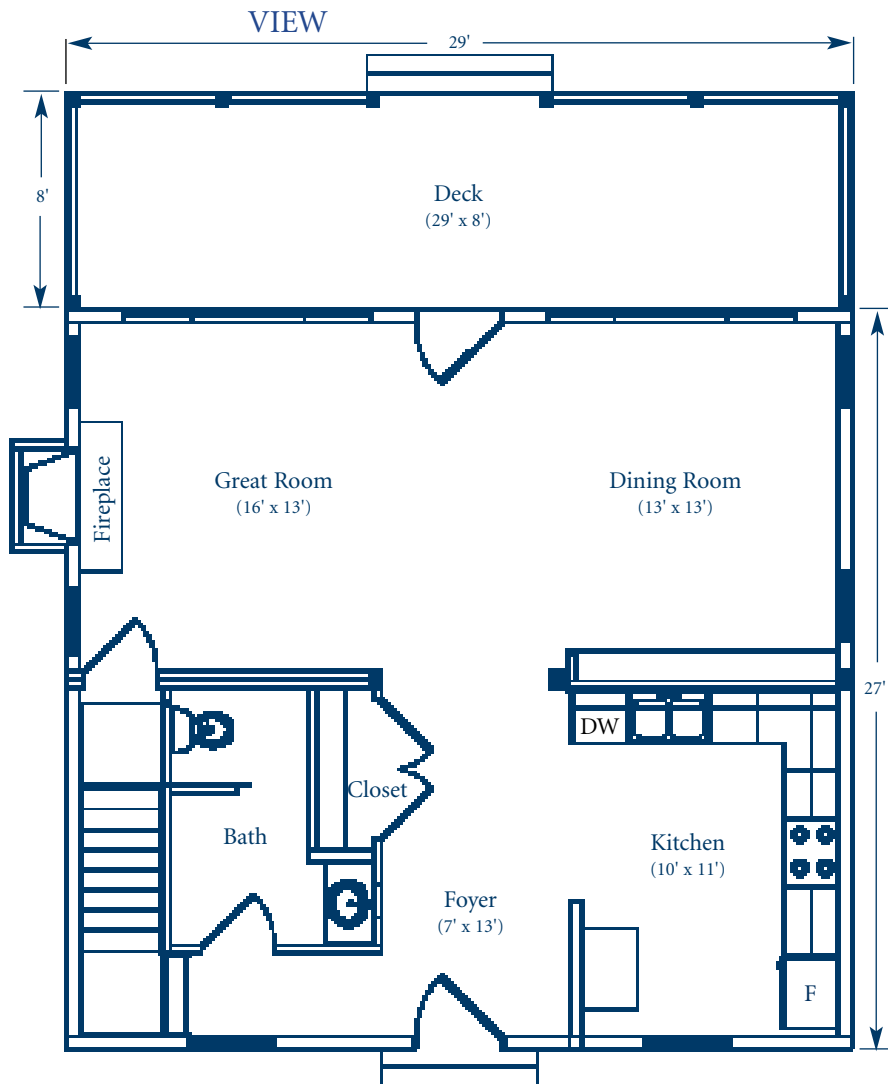
1,307 Square Feet • Two Bedrooms • Two Baths • Fireplace • Private Deck

The Sheepscot, our traditionally styled cape with a contemporary flare is the perfect weekender. Designed for people who are simplifying their lives, the open floor plan encourages a flow of conversation and movement. Ideal when boating, antiquing, hiking, kayaking and life beckons.

Small in size, this design lives large. The sun-filled Great Room and Dining area with generous 9 ft ceilings feature a wall of windows punctuated by a French door

opening onto the deck. When the sun sets, the fireplace takes center stage in the Great Room as well as providing a warm ambiance for late evening dinners. The Kitchen, with Energy Star appliances, ample cabinets and pantry can produce bread to bouillabaise. The extended counter top/bar is ideal for a quick sandwich, or can easily double as an elegant sideboard. A powder room and full size coat closet are tucked just off the front foyer.

Upstairs, the two identical bedrooms with oversized dormers feature generous windows—perfect for capturing Maine's gentle evening breezes. A full bath with tub/shower combination, sitting area and laundry facilities with linen storage complete the layout. The Sheepscot makes it easy to enjoy life's simple pleasures—a down comforter, a good book, and the evening's chorus of crickets.



Dimensions are nominal

05/07