



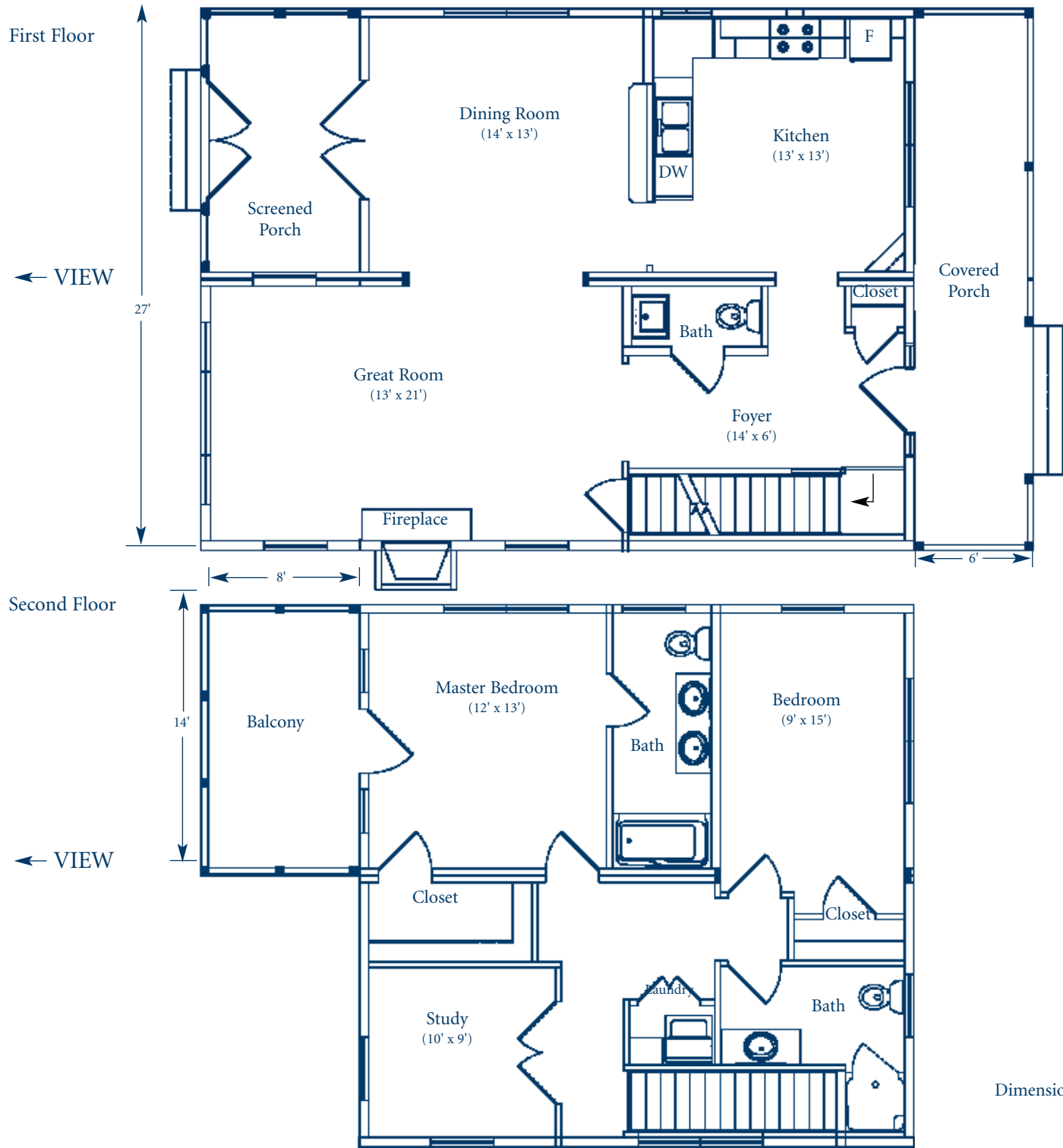
POINT EAST  
MARITIME VILLAGE

THE  
*Penobscot*

From porch to porch, the Penobscot celebrates simplicity with its open, flowing floor plan. Light and space are captured in the Great Room's wall windows and 9ft ceilings.

The Kitchen, designed for entertaining, features a half wall opening to the Dining Room. The full length buffet counter doubles as a sideboard and discrete screen for the double sink/prep area. Energy Star appliances, corner cutout and windows to the front porch make the Kitchen a joy to work in. Just add a butcher block table for those extra helping hands. Double french doors in the Dining Room draw guests onto a classic screened porch. A powder room and front hall closet are thoughtfully provided.

Upstairs, the Master Bedroom opens onto a private balcony. The en suite bath features natural light, double vanities and full tub/shower combination. A generous walk-in closet is included. The private study is perfect for a home office, sewing room, or library. The second bedroom, a second bath as well as a linen closet and discrete laundry facilities will handle your guests with ease.



Dimensions are nominal  
05/07