

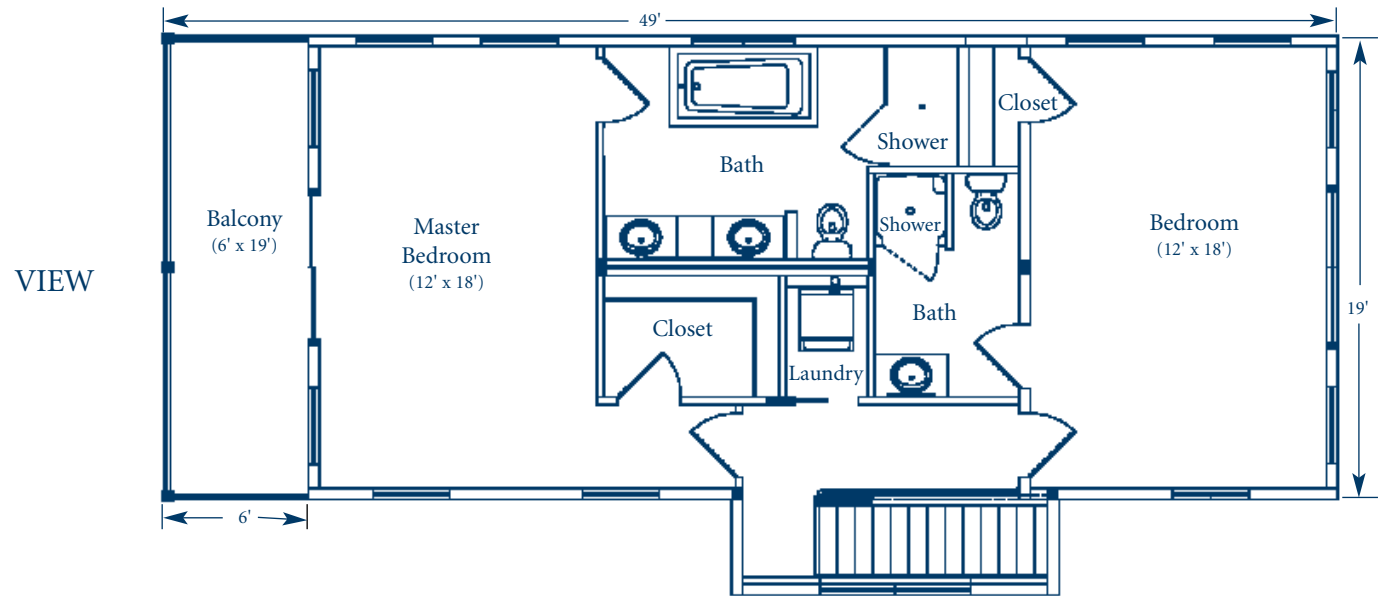
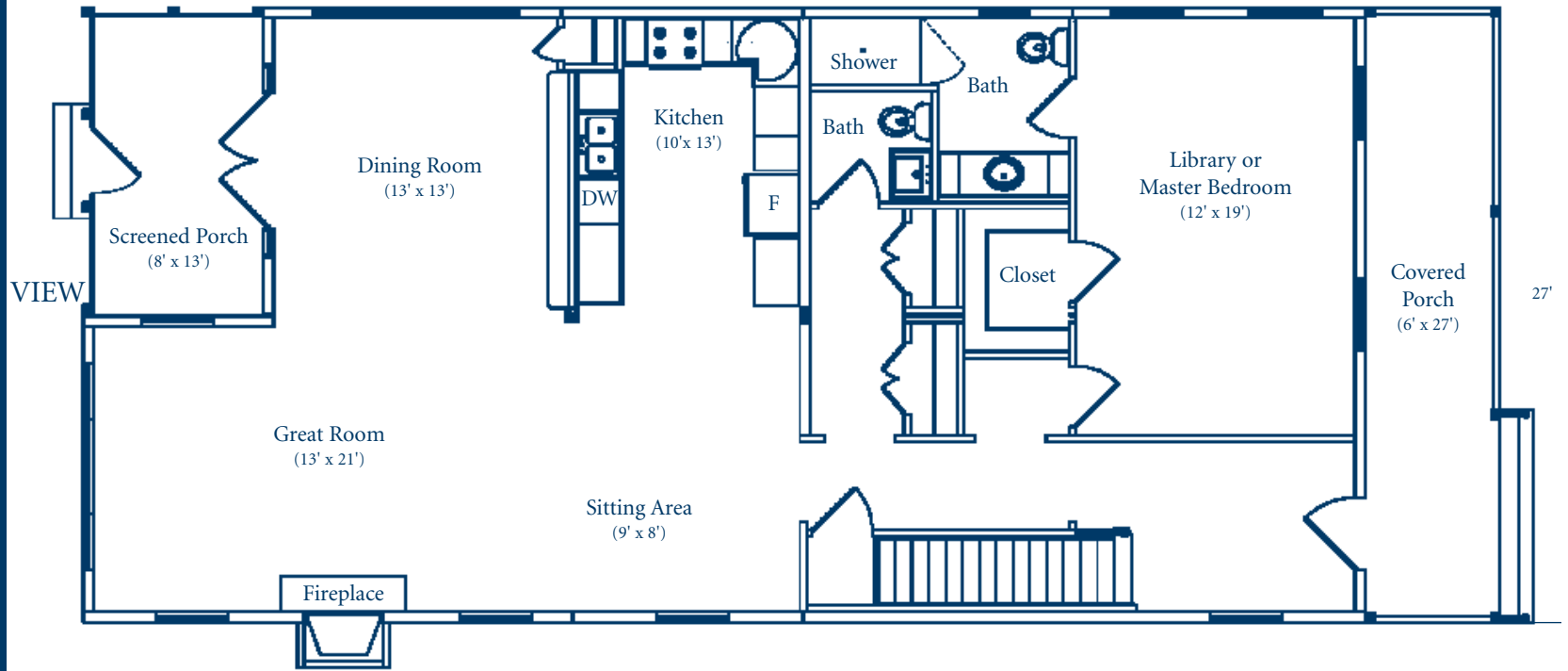


POINT EAST
MARITIME VILLAGE

THE Kennebec

warmth of wood floors and crackling fire in the Great Room make the Kennebec a perfect gathering spot after a day on the water. Gourmets delight in the thoughtful kitchen layout featuring Energy Star appliances, generous pantry storage and an extensive countertop that adjoins the Dining Area. A china closet tucked into the corner of the Dining Area makes entertaining a breeze. And on those steamy summer nights, adjourn after dinner to the screened-in porch to listen to the crickets' serenade. The spacious first floor features a Master Bedroom or Library with a private bath with handheld shower, radiant heated floors and generous walk-in closet. There's even a powder room for guests and a double of closets for extra storage.

Upstairs, the second Master Bedroom opens onto its own private sleeping balcony. The suite Master Bath includes a whirlpool tub, separate shower and a double vanity. A generous third bedroom with its own bath and discrete laundry facilities complete this thoughtful design.



2,334 Square Feet • Three Bedrooms • Four Baths • Fireplace • Two Covered Porches • 1st Floor Master

Dimensions are nominal

05/07