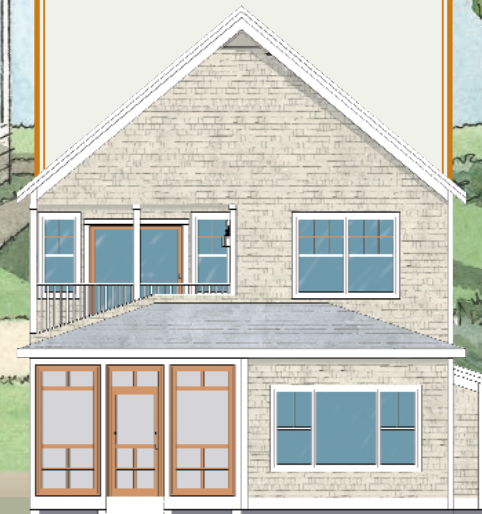




THE
Androscoggin

2,705 Square Feet
Four Bedrooms
Four Baths
Fireplace
1st Floor Master
Two Covered Porches
Second Floor Balcony



POINT EAST

A LAND TRUST DEVELOPMENT - WISCASSET, MAINE

Maritime Village

One Point East Drive, Wiscasset, Maine, 04578
(207) 882-8098 • www.pointeastmaine.com

THE Androscoggin

From the soaring two story entrance foyer to stunning waterviews, the Androscoggin is designed for fine food and festivities. The sun-filled Great Room and Dining Area with 9 ft ceilings open easily to the waterfront screen porch. The open floor plan invites guests into the Kitchen with an eat-in counter. Storage abounds with a custom china closet and floor-to-ceiling pantry. The first floor Master Bedroom or Library features a walk-in closet and private bath. A discrete powder room for guests and double closets for the extra sweaters and coats are thoughtfully provided.

Upstairs, a second Master Bedroom opens onto a private balcony—perfect for watching the moon rise over the Ice Pond. The Master Bath features a tub, shower, and double vanity. A wall full of closets is a welcome addition. The second bedroom also enjoys the water view with double windows and double closets. The spacious second floor landing, third bedroom with its own walk-in closet, a shared full bath, laundry and linen closets complete the layout.

